

**J.K. SHAH<sup>®</sup>**  
**C L A S S E S**

a **Veranda**  
E n t e r p r i s e

THE LEADER IN COMMERCE  
COACHING. SINCE 1983.



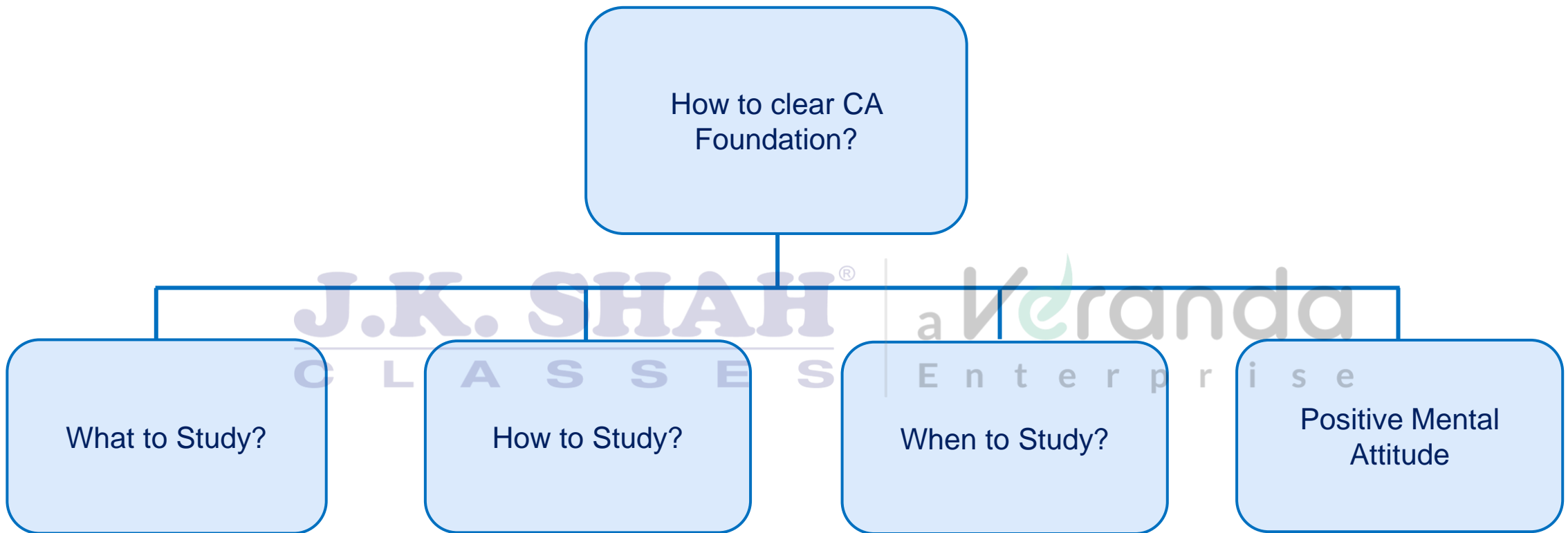
# How to clear CA Foundation May 2025?



# ***DISCLAIMER***



- The ABC Analysis of all papers is solely based on yester years' Question papers. It should only be used as an indicative guide. This analysis may or may not hold good for future examinations.
- For Papers 3 & 4, the analysis (which is near to accurate) is based only on the feedback received from the students (as per the memory of the students) as the question paper is not released officially by ICAI.



## WHAT TO STUDY?

Sr. No.	SUBJECT	JKSC Notes	ICAI Module	RTP + ICAI Mock Test Papers + ICAI Past Exam Papers
1	Accounting	✓	✓	✓
2	Business Laws	✓	x	✓
3	Business Mathematics*	✓	x	✓
4	Logical Reasoning*	✓	x	✓
5	Statistics*	✓	x	✓
6	Business Economics*	✓	✓	✓

*\*ICAI does not release RTP for these papers. Students are advised to solve the Mock Test papers thoroughly.*

## HOW TO STUDY?

ABC Analysis  
of all papers

## PAPER 1

**J.K. SHAH®** a **Veranda**  
CLASSES Enterprise

# ACCOUNTING



# PREP STRATEGY

- Solve all Practical Questions. Writing practice is necessary.
- Refer ICAI Module, specially for theory questions which are given in the exercise.
- Focus on conceptual clarity of each topic.
- In every attempt, 1 mark question is asked on capital/revenue expenditure & receipts for **sure**.
- Important units from theory point of view from Theoretical Framework chapter:
  - Accounting Concepts, Principles And Conventions
  - Capital and Revenue Expenditure and Receipts
  - Contingent Assets and Contingent Liabilities

*Note : As few topics are not applicable w.e.f June'24 exam, they have not been considered for analysis and the totals might not add up to 100.*



Grade	Chapter Name	May 18	Nov 18	May 19	Nov 19	Nov 20		July 21	Nov (Dec) 21	May 22	Nov 22	May 23	Dec 23	Jun 24	Sep 24	Jan 25
						Cycle 1 Nov/Dec 20	Cycle 2 Jan/Feb 21									
<b>A</b>	Accounting Process – Part II – Rectification of errors	16	10	6	10	7	10	10	5	-	12	7	-	16	4	-
	Bank Reconciliation Statement	10	10	10	10	10	4	5	10	5	10	5	8	5	10	10
	Final accounts of sole traders + Manufacturing account	20	7	10	20	15	5	15	15	20	10	-	15	7	10	15
	Company Accounts – shares	12	10	10	15	10	17	17	15	15	15	15	15	-	10	15
	Financial statement of non- profit organisation	-	12	10	10	10	20	10	10	10	12	15	12	12	12	10
	Single Entry System	-	-	-	-	-	-	-	-	-	-	-	-	8	5	5
	Dissolution of Partnership Firms & LLPs	Approx 10 marks												8	-	-
	Company Accounts – Bonus and Rights Issue	Approx 5 marks												10	-	-
	Company Accounts - Redemption of Pref Shares	Approx 10 marks												15	-	2
	<b>TOTAL</b>	<b>58</b>	<b>49</b>	<b>46</b>	<b>65</b>	<b>52</b>	<b>56</b>	<b>57</b>	<b>55</b>	<b>50</b>	<b>59</b>	<b>42</b>	<b>50</b>	<b>81</b>	<b>51</b>	<b>57</b>

Grade	Chapter Name	May 18	Nov 18	May 19	Nov 19	Nov 20		July 21	Nov (Dec) 21	May 22	Nov 22	May 23	Dec 23	June 24	Sep 24	Jan 25
						Cycle 1 Nov/Dec 20	Cycle 2 Jan/Feb 21									
<b>B</b>	Theoretical Framework	7	6	6	6	8	8	4	4	9	10	6	5	6	-	8
	Depreciation	-	6	10	4	5	10	4	5	10	9	10	5	8	5	10
	Partnership - Death	-	-	10	10	-	10	12	-	-	-	20	-	-	2	15
	Bills of exchange	-	-	7	2	10	-	-	10	-	15	5	10	2	12	5
	Accounting Process - Part I - Journal, ledger, Trial Balance, Subsidiary books	-	-	-	2	4	2	12	10	4	5	9	5	9	4	15
	<b>Piecemeal Distribution</b>	Approx 10 marks												-	-	-
	<b>Company Accounts – Redemption of Debentures</b>	Approx 5 marks												-	10	5
	<b>TOTAL</b>	<b>7</b>	<b>12</b>	<b>33</b>	<b>24</b>	<b>27</b>	<b>30</b>	<b>32</b>	<b>29</b>	<b>23</b>	<b>39</b>	<b>50</b>	<b>25</b>	<b>25</b>	<b>33</b>	<b>58</b>

## PAPER 1 : ACCOUNTING (100 marks)

Grade	Chapter Name	May 18	Nov 18	May 19	Nov 19	Nov 20		July 21	Nov (Dec) 21	May 22	Nov 22	May 23	Dec 23	Jun 24	Sep 24	Jan 25
						Cycle 1 (Nov/Dec 20)	Cycle 2 (Jan/Feb 21)									
<b>C</b>	Inventories	-	-	5	7	10	5	7	4	5	2	2	4	5	12	7
	Partnership - Introduction	2	-	2	2	-	5	-	5	-	5	5	5	2	-	5
	Partnership – Retirement	10	-	-	-	10	-	5	-	10	-	-	10	-	10	-
	Company Accounts - debentures	-	5	5	-	5	-	-	-	-	-	3	-	-	-	-
	Partnership – Admission	-	15	-	-	2	-	-	10	-	10	-	-	12	10	-
	Company Accounts – Introduction	-	-	-	2	2	-	2	-	-	-	1	-	-	-	-
	Partnership - Goodwill valuation	-	-	-	-	-	-	-	-	5	5	-	-	-	-	-
	<b>TOTAL</b>	<b>12</b>	<b>20</b>	<b>12</b>	<b>11</b>	<b>29</b>	<b>10</b>	<b>14</b>	<b>19</b>	<b>20</b>	<b>17</b>	<b>11</b>	<b>19</b>	<b>19</b>	<b>32</b>	<b>12</b>

## PAPER 2

**J.K. SHAH®**  
CLASSES

a Veranda  
Enterprise

# BUSINESS LAWS



## PREP STRATEGY

- Study Theory & Questions only from JKSC notes as ICAI Module, Past RTP and MTP have been incorporated in JKSC notes.
- Theory Questions: Answer in point form.
- Practical Questions: Answer in 3 paragraphs.
- Write legal terms, Latin terms and relevant case laws wherever required.
- Writing practice of answers is a must to score your best marks in this subject.



Grade	Chapter Name	May 18	Nov 18	May 19	Nov 19	Nov 20		Jul y 21	Nov (Dec ) 21	May 22	Nov 22	May 23	Dec 23	Jun 24	Sep 24	Jan 25
						Cycle 1 (Nov/Dec 20)	Cycle 2 (Jan/Feb 21)									
<b>A</b>	Indian Contract Act, 1872	24	22	22	22	22	22	22	22	22	22	22	22	38	32	32
	Indian Partnership Act, 1972	16	18	18	18	18	18	16	16	16	16	16	16	20	20	20
	Sale of Goods Act, 1930	16	16	16	16	16	16	16	16	16	16	16	16	21	21	21
	Companies Act, 2013	13	13	13	13	13	13	13	13	13	13	13	13	21	21	21
	Negotiable Instruments Act, 1881	Approx 10 to 15 marks												14	14	14
	<b>TOTAL</b>	<b>69</b>	<b>69</b>	<b>69</b>	<b>69</b>	<b>69</b>	<b>69</b>	<b>67</b>	<b>67</b>	<b>67</b>	<b>67</b>	<b>67</b>	<b>67</b>	<b>114</b>	<b>108</b>	<b>108</b>
<b>B</b>	Limited Liability Partnership Act, 2008	5	5	5	5	5	5	5	5	5	5	5	5	6	6	6
	Indian Regulatory Framework	Approx 5 marks												6	6	6
	<b>TOTAL</b>	<b>5</b>	<b>5</b>	<b>5</b>	<b>5</b>	<b>5</b>	<b>5</b>	<b>5</b>	<b>5</b>	<b>5</b>	<b>5</b>	<b>5</b>	<b>5</b>	<b>12</b>	<b>12</b>	<b>12</b>

**PAPER 3A**

**BUSINESS  
MATHEMATICS**



## HOW TO APPROACH THIS PAPER?

1. **Logical Reasoning**
2. **Statistics**
3. **Business Mathematics**

## PAPER 3A : BUSINESS MATHEMATICS (40 marks)

Grade	Chapter Name	May 18	Nov 18	May 19	Nov 19	Nov 20		July 21	Nov (Dec) 21	May 22	Nov 22	May 23	Dec 23	Jun 24	Sep 24	Jan 25
						Cycle 1 (Nov/Dec 20)	Cycle 2 (Jan/Feb 21)									
A	Time Value of Money	6	14	10	14	14	14	14	11	14	14	14	14	14	14	15
	Ratio, Proportion, Indices & log	5	4	5	6	6	5	5	8	6	4	4	3	3	4	6
	Sets, Relations and Function	3	3	5	3	3	2	4	3	3	4	6	4	1	4	2
	Permutations and Combinations	2	4	4	4	4	7	4	4	7	4	4	3	4	4	5
	<b>TOTAL</b>	<b>16</b>	<b>25</b>	<b>24</b>	<b>27</b>	<b>27</b>	<b>28</b>	<b>27</b>	<b>26</b>	<b>30</b>	<b>26</b>	<b>28</b>	<b>24</b>	<b>22</b>	<b>26</b>	<b>28</b>

## PAPER 3A : BUSINESS MATHEMATICS (40 marks)

Grade	Chapter Name	May 18	Nov 18	May 19	Nov 19	Nov 20	Cycle 2 (Jan/Feb 21)	July 21	Nov (Dec) 21	May 22	Nov 22	May 23	Dec 23	Jun 24	Sep 24	Jan 25
						Cycle 1 (Nov/Dec 20)										
<b>B</b>	Equations	11	5	4	3	6	6	5	4	4	5	4	4	4	4	2
	Sequences and Series	4	4	4	4	4	3	3	4	4	3	3	6	4	4	4
	Inequalities	1	1	3	1	-	1	1	2	-	1	2	2	2	2	2
	Differential and Integral Calculus	4	4	5	5	2	2	4	4	3	5	4	4	3	4	4
	Basics of Limits and Continuity functions	-	-	-	-	-	-	-	-	-	-	-	-	1	-	
	<b>TOTAL</b>	<b>20</b>	<b>14</b>	<b>16</b>	<b>13</b>	<b>12</b>	<b>12</b>	<b>13</b>	<b>14</b>	<b>11</b>	<b>14</b>	<b>13</b>	<b>16</b>	<b>14</b>	<b>14</b>	<b>12</b>

**PAPER 3B**

**LOGICAL  
REASONING**



## PREP STRATEGY

- Students are advised to attempt Logical reasoning at the beginning of the exam.
- As JKSC notes comprehensively cover the ICAI Module, you are advised to solve all the questions from JKSC notes (Classwork & Homework both).
- Apart from JKSC notes , for extra practice students are advised to solve questions from the scanner.



## PAPER 3B : LOGICAL REASONING (20 marks)

Grade	Chapter Name	May 18	Nov 18	May 19	Nov 19	Nov 20		Jul 21	Nov (Dec) 21	May 22	Nov 22	May 23	Dec 23	Jun 24	Sep 24	Jan 25
						Cycle 1 (Nov/Dec 20)	Cycle 2 (Jan/Feb 21)									
<b>A</b>	Number Series, Coding and Decoding	3	5	4	5	4	5	5	5	5	6	5	5	5	5	5
	Direction Test	6	5	4	6	5	3	4	5	5	4	5	4	5	5	5
	Seating Arrangement	5	3	4	2	2	4	4	5	4	3	3	5	5	5	5
	Blood Relations	5	4	4	4	6	4	4	5	5	7	7	7	5	5	5
	<b>TOTAL</b>	<b>19</b>	<b>17</b>	<b>16</b>	<b>17</b>	<b>17</b>	<b>16</b>	<b>17</b>	<b>20</b>	<b>19</b>	<b>20</b>	<b>20</b>	<b>21</b>	<b>20</b>	<b>20</b>	<b>20</b>

## PAPER 3C

**J.K. SHAH®** a **Veranda**  
CLASSES Enterprise

# STATISTICS



## PREP STRATEGY

- Solve questions from Set A and Set B from the ICAI module and if time permits refer additional question bank for Theory questions.
- Apart from JKSC notes , for extra practice students are advised to solve questions from the scanner.

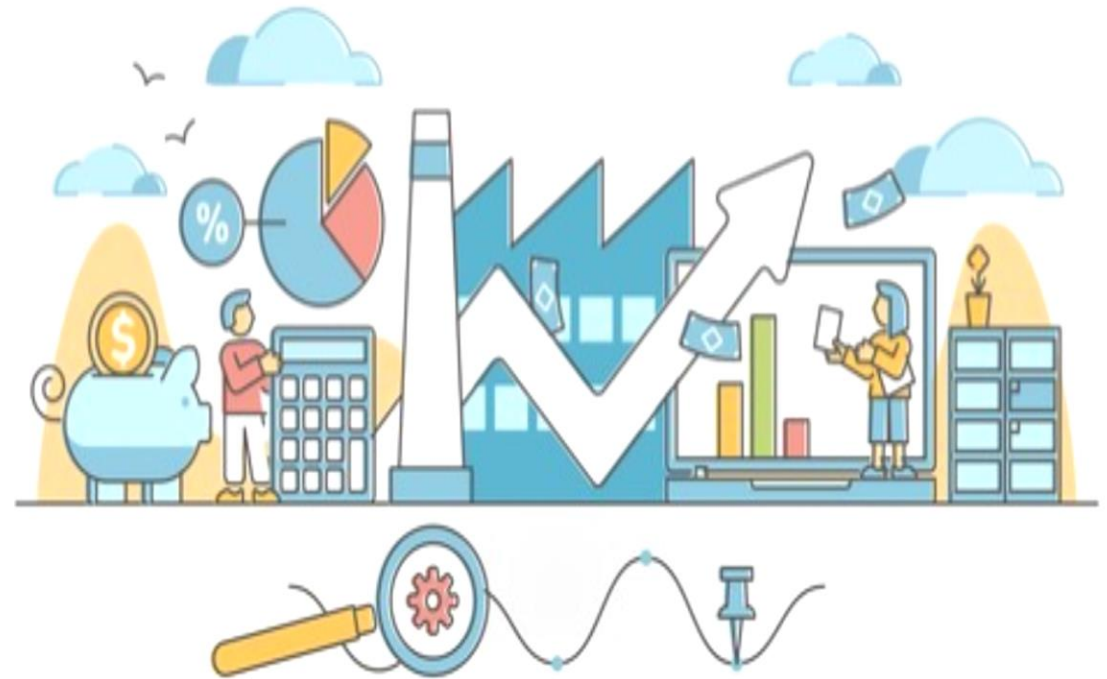


## PAPER 3C : STATISTICS (40 marks)

Grade	Chapter Name	May 18	Nov 18	May 19	Nov 19	Nov 20		July 21	Nov (Dec) 21	May 22	Nov 22	May 23	Dec 23	Jun 24	Sep 24	Jan 25
						Cycle 1 (Nov/Dec 20)	Cycle 2 (Jan/Feb 21)									
<b>A</b>	Measure of Central Tendency and Dispersion	7	12	13	15	12	9	11	11	11	14	14	12	11	10	11
	Statistical Description of Data	2	6	5	4	7	10	8	7	7	4	5	6	3	7	5
	Index Number and Time Series	7	5	10	6	7 <sup>®</sup>	5	5	5	5	5	6	5	5	5	5
	Sampling	-	-	-	-	-	-	-	-	-	-	-	-	2	2	5
	<b>TOTAL</b>	<b>16</b>	<b>23</b>	<b>28</b>	<b>25</b>	<b>26</b>	<b>24</b>	<b>24</b>	<b>23</b>	<b>23</b>	<b>23</b>	<b>25</b>	<b>23</b>	<b>21</b>	<b>24</b>	<b>26</b>
<b>B</b>	Correlation and Regression	8	5	5	3	3	5	5	4	5	5	4	5	5	4	6
	Probability and Random Variable	7	6	5	3	3	6	7	8	6	8	7	7	7	7	5
	Theoretical Distribution	6	5	4	7	7	4	4	5	5	4	4	5	4	5	3
	<b>TOTAL</b>	<b>21</b>	<b>16</b>	<b>14</b>	<b>13</b>	<b>13</b>	<b>15</b>	<b>16</b>	<b>17</b>	<b>16</b>	<b>17</b>	<b>15</b>	<b>17</b>	<b>16</b>	<b>16</b>	<b>14</b>

## PAPER 4

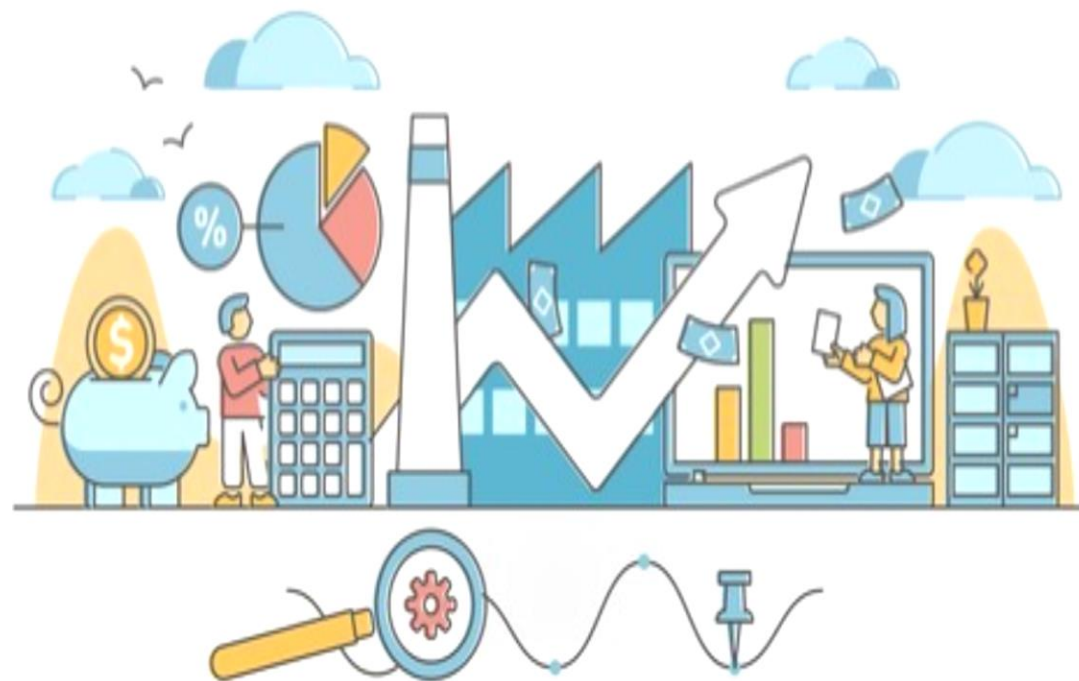
# BUSINESS ECONOMICS



*\*ABC Analysis for Nov(Dec)'21 is not available.*

## PREP STRATEGY

- Create a synopsis for each topic and review your assignments and class notes.
- Before you start any new topic, you are advised to revise the old topics for at least 10 minutes.
- Refer past exam question papers to get yourself acquainted with the pattern of questions.
- Avoid mugging up the topics. Try to ask yourself broad open-ended questions about the material covered.



## PAPER 4 : BUSINESS ECONOMICS (100 marks)

Grade	Chapter Name	May 18	Nov 18	May 19	Nov 19	Nov 20		Jul 21	Nov (Dec) 21	May 22	Nov 22	May 23	Dec 23	Jun 24	Sep 24	Jan 25
						Nov/Dec 20	Jan/Feb 21									
<b>A</b>	Theory of Demand and Supply	14	17	15	12	12	13	16	-	18	15	18	16	13	11	10
	Theory of Production & Cost	18	10	15	9	10	11	7	-	5	9	11	12	12	10	10
	Indian Economy	-	-	-	-	-	-	-	-	-	-	-	-	11	10	10
	National Income	Approx 15 marks												17	15	15
	International Trade	Approx 10 marks												11	10	10
	<b>TOTAL</b>	<b>32</b>	<b>27</b>	<b>30</b>	<b>21</b>	<b>22</b>	<b>24</b>	<b>23</b>	<b>-</b>	<b>23</b>	<b>24</b>	<b>29</b>	<b>28</b>	<b>64</b>	<b>56</b>	<b>55</b>

## PAPER 4 : BUSINESS ECONOMICS (100 marks)

Grade	Chapter Name	May 18	Nov 18	May 19	Nov 19	Nov 20		July 21	Nov (Dec) 21	May 22	Nov 22	May 23	Dec 23	Jun 24	Sep 24	Jan 25
						Nov/Dec 20	Jan/Feb 21									
<b>B</b>	Price determination in different markets	13	15	12	18	17	15	15	-	15	15	10	9	8	15	15
	Money Market	Approx 5 - 10 marks												10	10	10
	TOTAL	13	15	12	18	17	15	15		15	15	10	9	18	25	25
<b>C</b>	Nature & Scope of Economics	7	9	8	9	10	11	11	-	12	10	11	11	4	5	5
	Business Cycle	8	9	10	12	11	10	11	-	10	11	10	12	4	5	5
	Public Finance	Approx 10 marks												6	9	10
	TOTAL	15	18	18	21	21	21	22		22	21	21	23	14	19	20

# TEST SERIES

CA Foundation - Prelim Schedule		
Prelims	Test Date	Subject
Prelim 1	15-Apr-2025	Accounting
	18-Apr-2025	Business Law
	21-Apr-2025	Quantitative Aptitude
	24-Apr-2025	Business Economics
Prelim 2	26-Apr-2025	Accounting
	28-Apr-2025	Business Law
	30-Apr-2025	Quantitative Aptitude
	02-May-2025	Business Economics
Prelim 3	04-May-2025	Accounting
	06-May-2025	Business Law
	08-May-2025	Quantitative Aptitude
	10-May-2025	Business Economics

