



Date: ___/___/___

MON TUE WED THR FRI SAT SUN
□ □ □ □ □ □ □Perfect Squares Series :- 1, 4, 9, 16, 25, 36

$$\underline{[1^2, 2^2, 3^2, 4^2, 5^2, 6^2]}$$

Perfect Cube Series :- 1, 8, 27, 64, 125, 216

$$\underline{[1^3, 2^3, 3^3, 4^3, 5^3, 6^3]}$$

Difference Series :- 1, 2, 3, 5, 7, 9

$$\underline{[2]}$$

RATIO SERIES :- 2, 4, 8, 16, 32, 64

$$\underline{[\div 2]}$$

PRIME SERIES :-

$$\underline{\{2, 3, 5, 7, 11, 13, 17, 19, 23\}}$$

MIXED SERIES :-

$$\begin{array}{cccccccc} & (2)^2 & (3)^2 & (4)^2 & (5)^2 & & & \\ 1, & 1, & 2, & 4, & 3, & 9, & 4, & 16, & 5, & 25 \\ \underbrace{\hspace{1cm}} & \underbrace{\hspace{1cm}} & \underbrace{\hspace{1cm}} & \underbrace{\hspace{1cm}} & & & & & & \\ +1 & +1 & +1 & +1 & & & & & & \end{array}$$

TWO TIER SERIES = 2, 5, 11, 23, 47
 ↙ ↘ ↙ ↘ ↙ ↘
 3 6 12 24

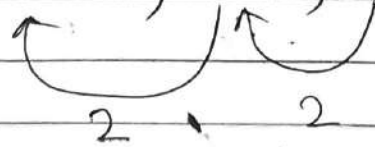
Alphabet Series :-

D H L P T X

A	B	C	D	E
1	2	3	4	5
F	G	H	I	J
6	7	8	9	10
K	L	M	N	O
11	12	13	14	15
P	Q	R	S	T
16	17	18	19	20
U	V	W	X	Y
21	22	23	24	25
			Z	26

Series : 7, 23, 47, 119, 167, ... 287

↓ ↓ ↓ ↓ ↓
 $3^2 - 2$, $5^2 - 2$, $7^2 - 2$, $11^2 - 2$, $13^2 - 2$, $17^2 - 2$



COPRIME NUMBERS

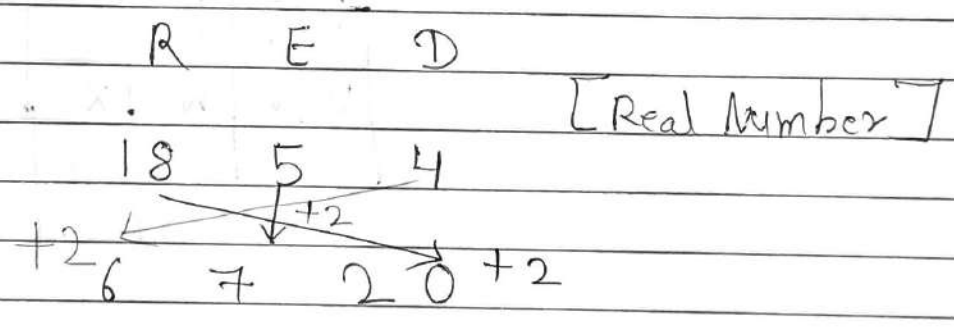
CODING DECODING :-

STUDENT → DUSTSTNE
Reverse.

NUMBER CODING :-

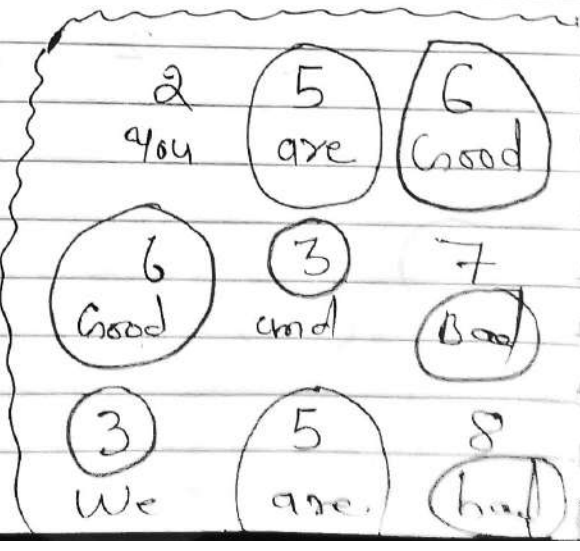
ATE → 145
CHIR → 09173

Ques. RED is coded → 6720



Ques. You are Good → 256
Good and bad → 637
We are bad → 358

And → ?
AND → 7



Odd MAN out :-

Exp. \rightarrow 3, 5, 7, 15, 17, 19

PRIME NO.

Exp. 835, 734, 642, 751, 853, 981, 532
 (8 = 3+5) (7 = 3+4) (6 = 4+2) (X) (8 = 5+3) (9 = 8+1)

All digit sum is equal

except \rightarrow 751 Ans

Exp. which is odd one, 4, 12, 44, 176, 890

$$\begin{aligned}
 4 \times 2 + 4 &= 12 \\
 12 \times 3 + 6 &= 42 \\
 42 \times 4 + 8 &= 176 \\
 176 \times 5 + 10 &= 890 \\
 890 \times 6 + 12 &= 5352
 \end{aligned}$$

(44) (44)